

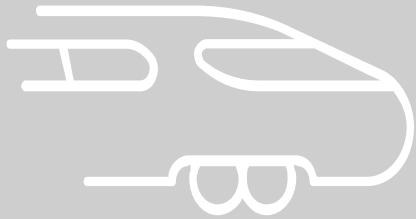


Rail Baltica - Infrastructure Management Legal Study

ÇIRTS RŪDA
GENERAL COUNSEL
RB RAIL AS



Co-financed by the European Union
Connecting Europe Facility



What is Rail Baltica?

What is Rail Baltica?

Railway
infrastructure for
passenger and
freight movement –
870 km

Catalyst for an
economic corridor
in North-East
Europe

To be launched in 2026

RAIL BALTICA – PART OF THE NORTH SEA-BALTIC CORE NETWORK CORRIDOR



Intermodality/Multimodality of Rail Baltica



- 7 railway passenger stations with potential regional stations
- 3 multimodal terminals
- Connected to airports and sea ports

Rail Baltica Global Project technical parameters



Total Line Length

870 km of which:
• 213 km in Estonia
• 265 km in Latvia
• 392 km in Lithuania

Design Speed

• 249 km/h for passenger trains
• 120 km/h for freight trains

Standard Gauge

1435 mm

Double-track Electrified

2x25kVAC

Axle Load

25 t

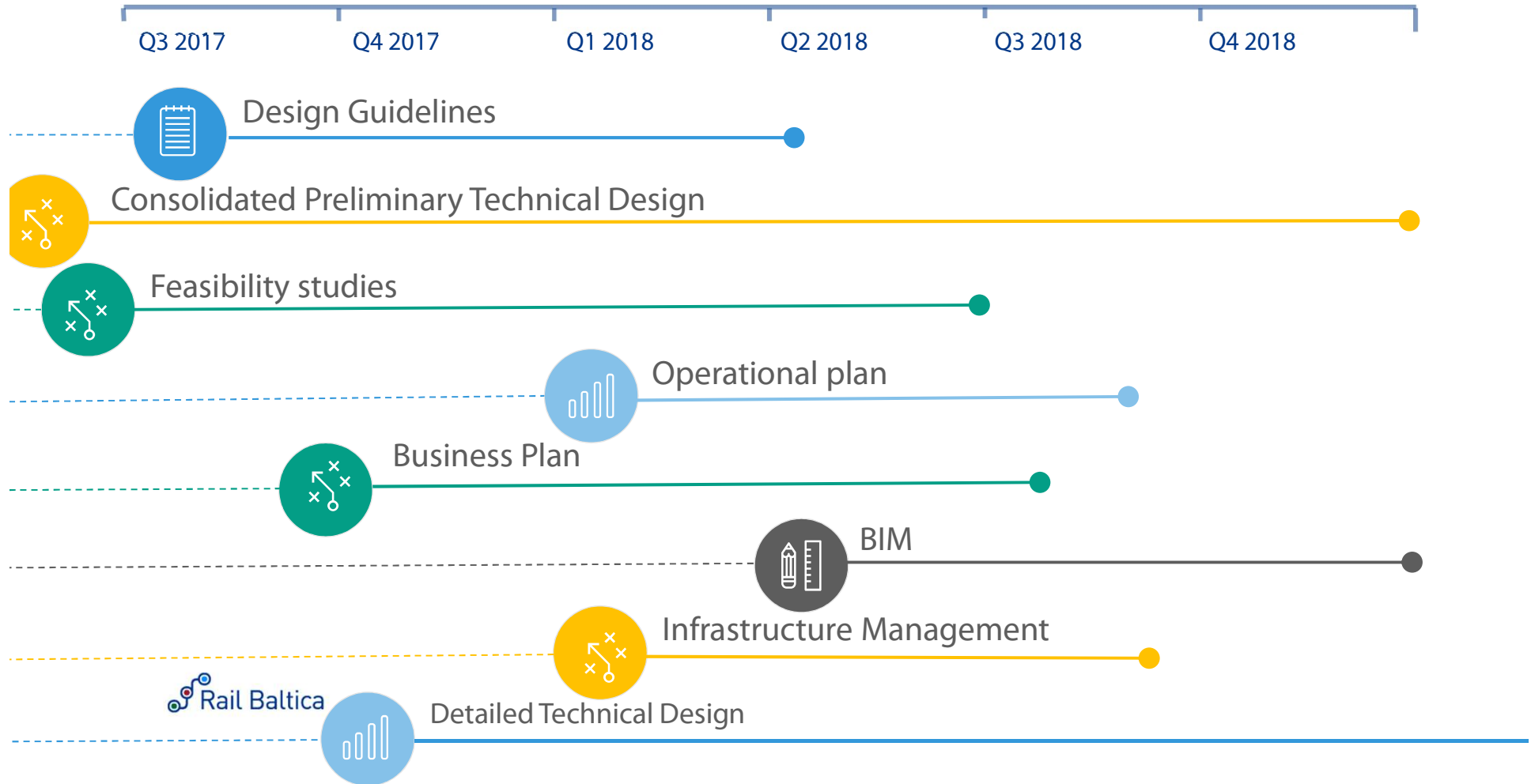
Traffic Management

ERTMS L2

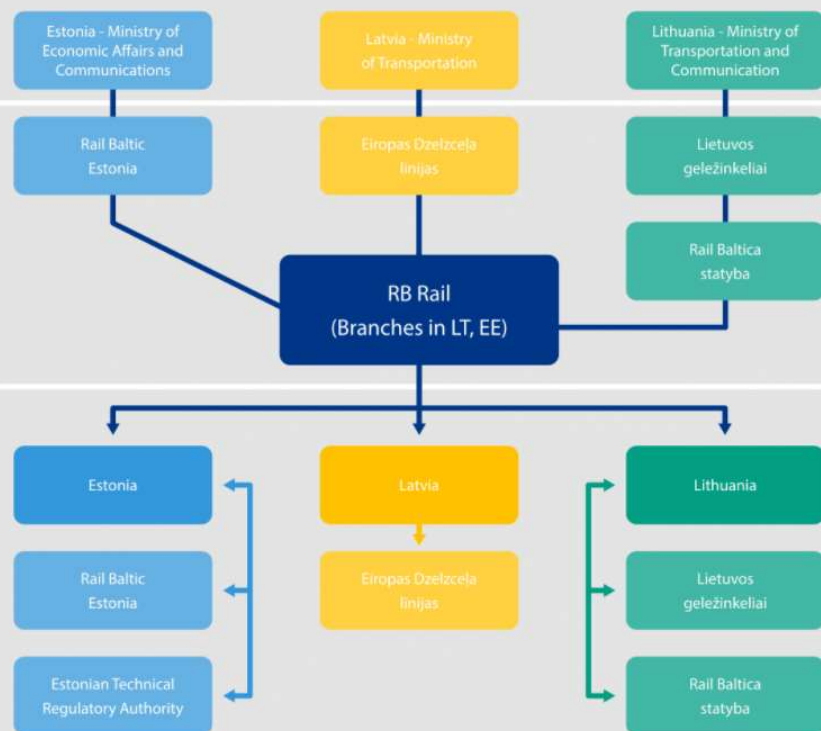
Max. Freight Train Length

1050 m

Process timeline



PROJECT IMPLEMENTERS



Beneficiaries – three ministries

RB Rail shareholders

Central project coordinator

National implementing bodies



Infrastructure Management Legal Study

Infrastructure Management Legal Study tender

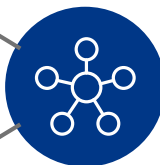
Best infrastructure
management model
prepared by Atkins



3 main deliverables



Tight deadlines



Team of international +
Baltic experts

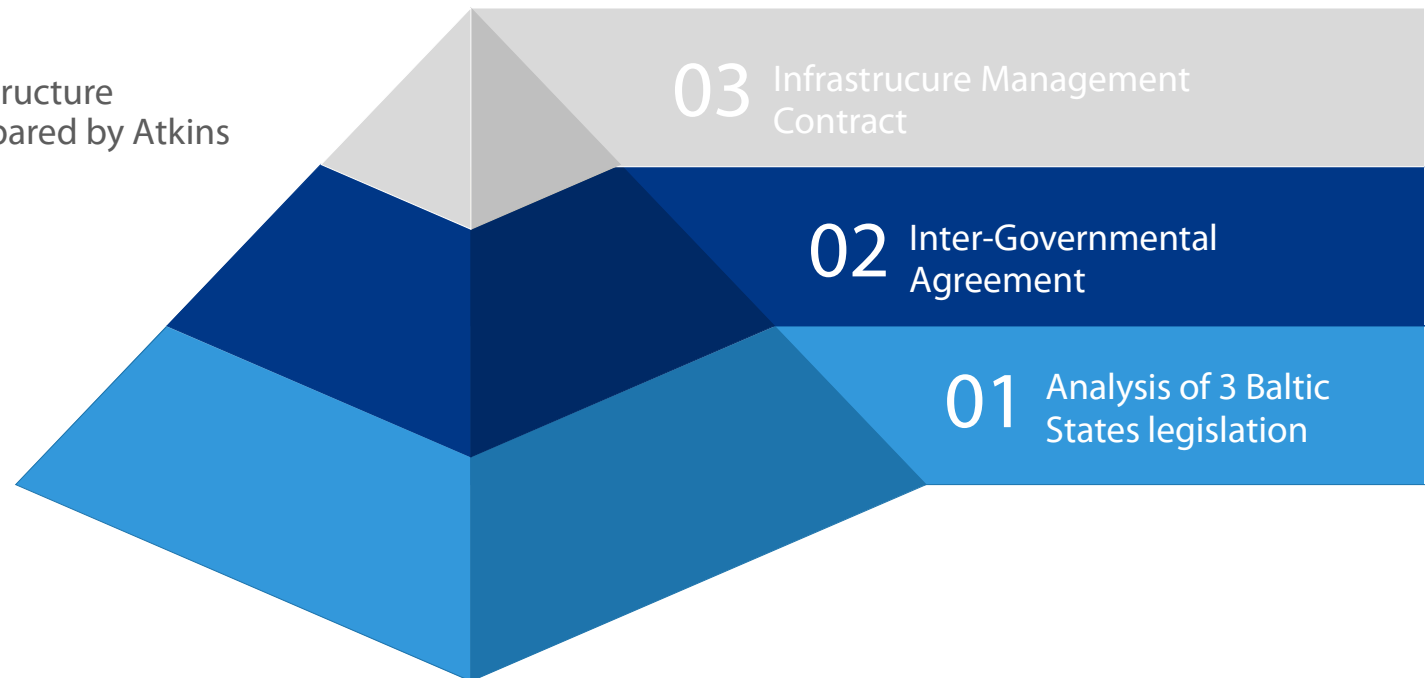


Close co-operation with
national governments

Deliverables

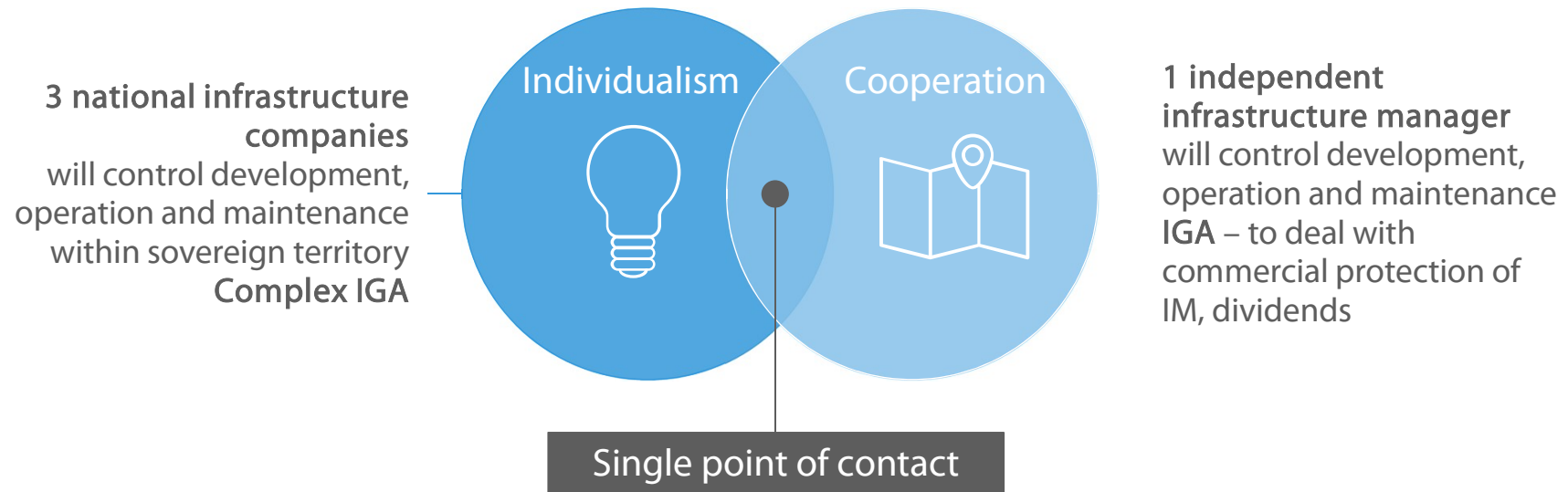
Based on

chosen Rail Baltica infrastructure management model prepared by Atkins



2 scenarios

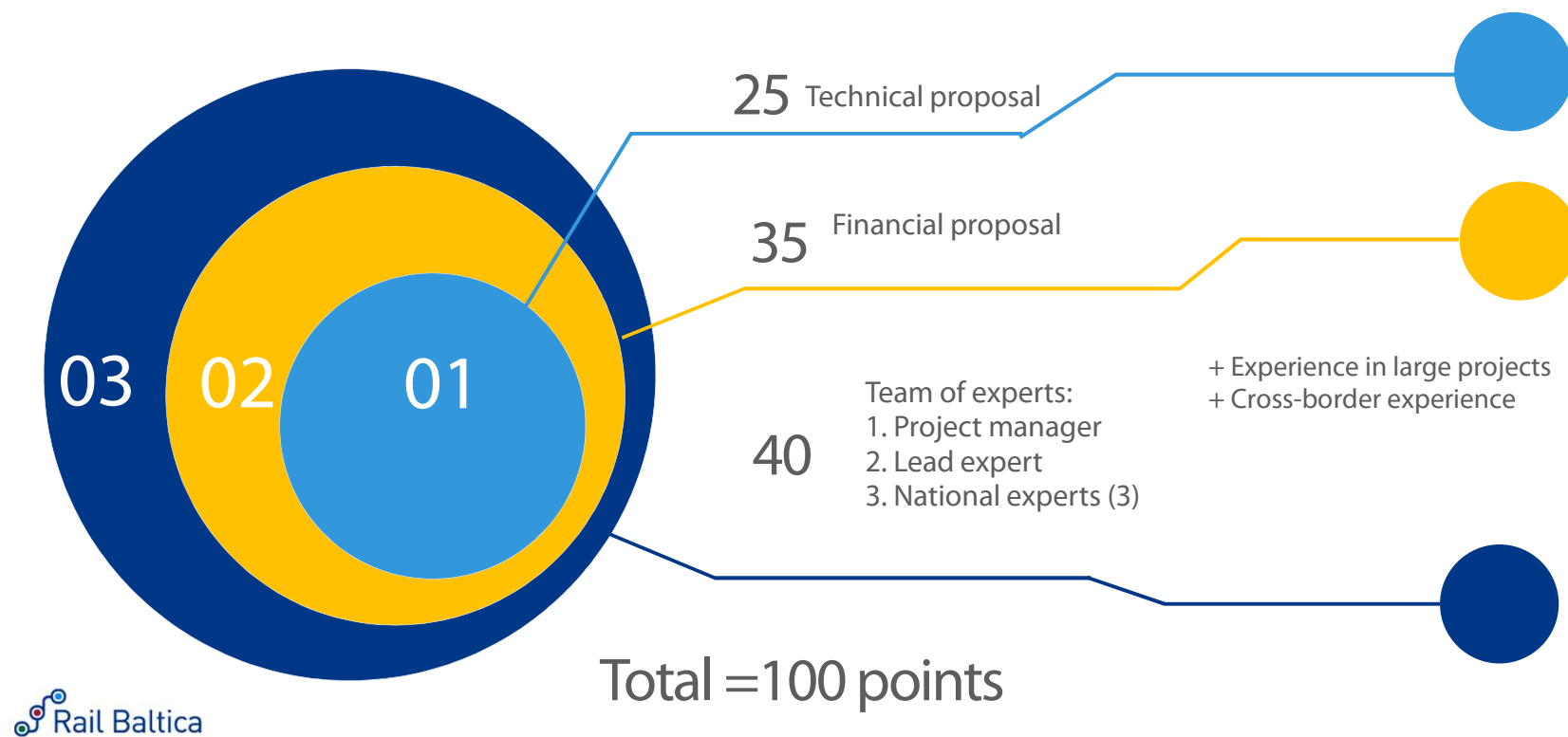
Compliant with 4th Railway package



Timeline (18 – 20 weeks)



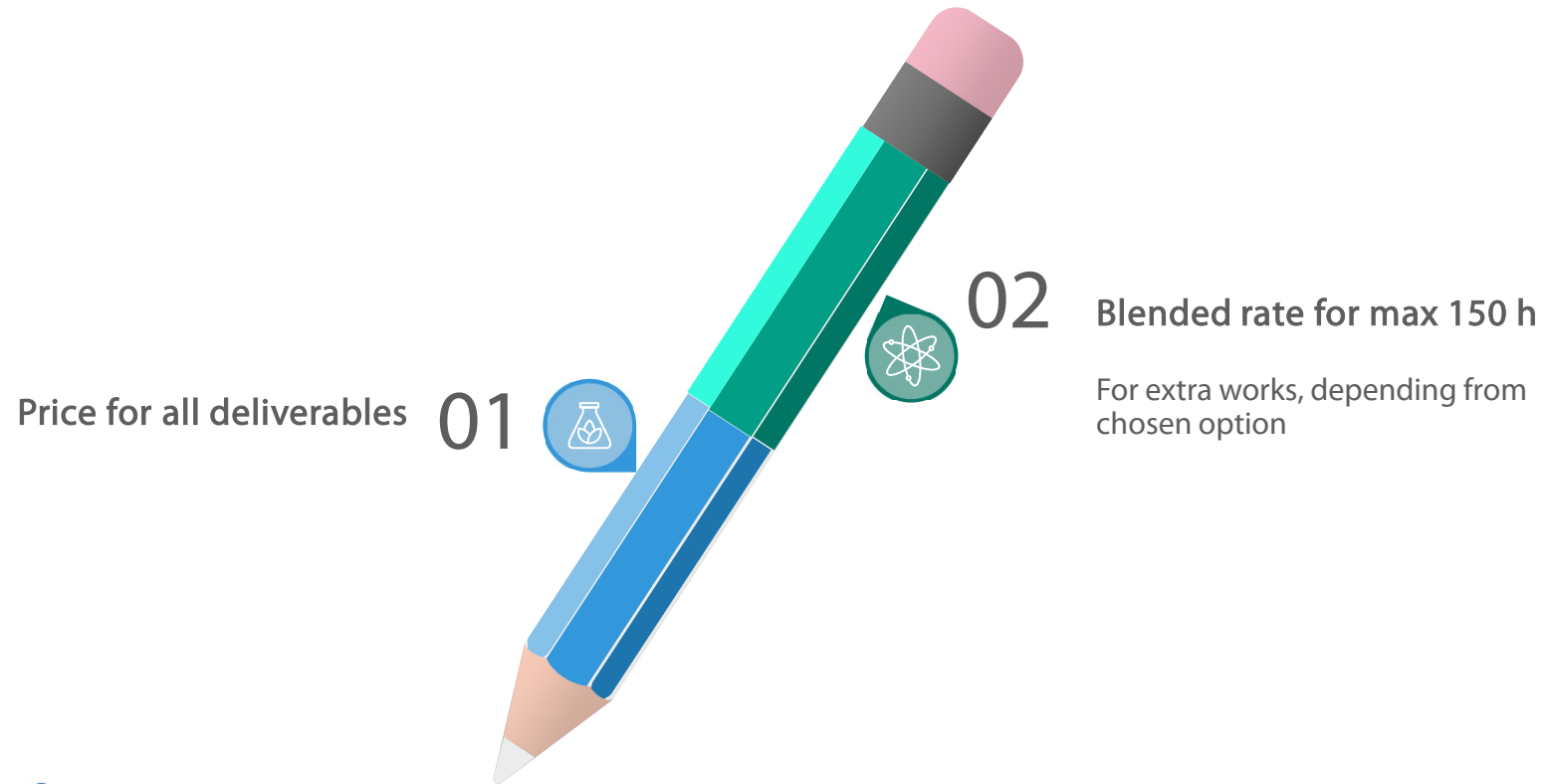
Evaluation



Technical proposal



Financial proposal



Team of experts



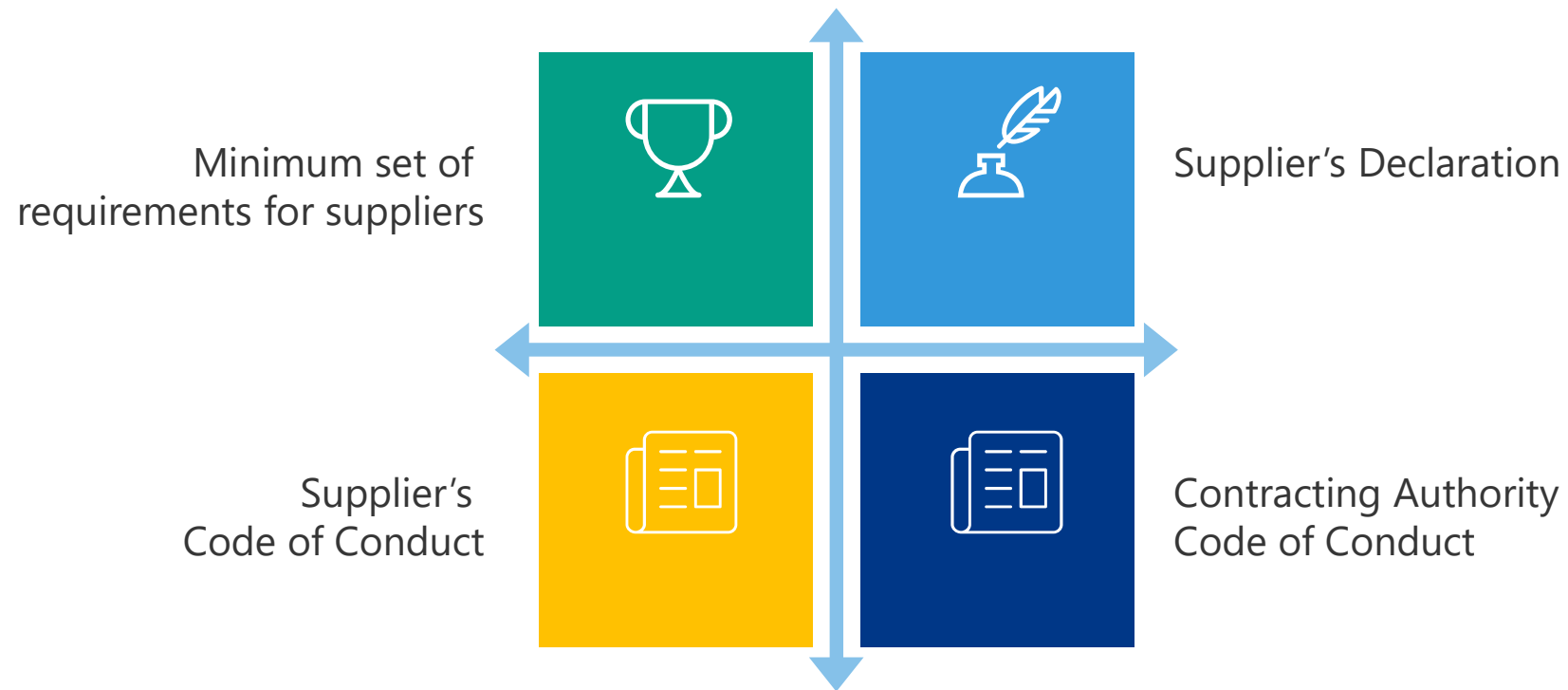


Procurement

Procurement Timeline (7 weeks)



Procurement main documents



Technical information

- ⦿ Governed by the Public Procurement Law of Latvia (Annex 2)
- ⦿ Estimated value – EUR 100,000 or less
- ⦿ Regulations will be available on <http://www.railbaltica.org/tenders/>
- ⦿ All information – in English
- ⦿ Application forms will be provided
- ⦿ Contact person - linda.kalnina@railbaltica.org

Contact us

RB Rail AS is a multi-national joint venture of the Republics of Estonia, Latvia and Lithuania, which has been established to **implement Rail Baltica**



RailBalticaGlobalProject



Info@railbaltica.org



railbaltica.org



K. Valdemara iela 8, 4th floor,
Riga, Latvia



+ 371 66 967 171



linkedin.com/company/rb-rail



@RailBaltica