

Rail Baltica: transforming the Baltics for connectivity, security and prosperity



Rail Baltica is the largest infrastructure project in Baltic history, reconnecting the region to the rest of Europe



The Baltic states used to have 1435 mm rail links to Europe, but the Soviet-era shift to Russia's 1520 mm gauge cut them off. Rail Baltica is now restoring this connection, integrating Estonia, Latvia and Lithuania into the EU network.

As part of the Trans-European Transport Network (TEN-T), Rail Baltica links the Baltics to key European corridors, boosting trade, mobility and economic resilience while reinforcing Europe's strategic infrastructure.





Unlocking new markets and opportunities

Rail Baltica is a completely new, modern infrastructure project – one of the top five of its scale in Europe – designed to transform connectivity. The North-South transport corridor is Europe's next frontier, to strengthen trade, security and cooperation from the Baltic to the Black and Aegean Seas. By cutting travel times by half and enabling the development of multimodal cargo logistics, Rail Baltica strengthens the region's position in the European market, driving economic growth and attracting investment.



Geopolitical railway for a stronger defence network

Rail Baltica is not just a rail project – it is a European priority and a strategic asset for security and logistics. As the backbone of NATO's transportation, it enables the swift movement of troops, equipment and supplies across the Baltic region. This dual-use corridor strengthens defence logistics while also serving as a key enabler for multimodal cargo transport, reinforcing both regional resilience and civilian mobility. With strong European support, Rail Baltica is setting a new standard for infrastructure in the region.

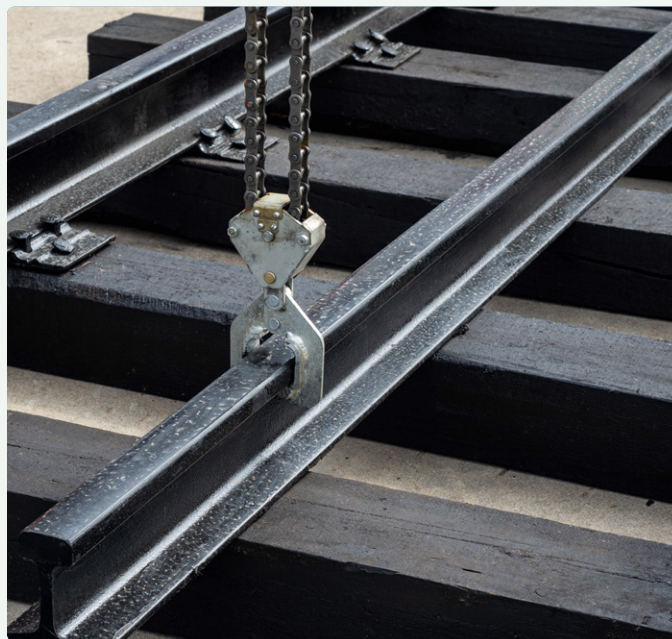
The Baltics – united for growth

Inspired by the Baltic Way, Rail Baltica symbolises unity and European integration. This unprecedented cross-border project, involving more than three countries – unlike most cross-border railways – is a showcase of cooperation. Nearly the entire Baltic construction industry is involved in its development, demonstrating the region's collective effort. Estonia, Latvia and Lithuania are working together to build a modern 900-km rail link that improves mobility, strengthens economic ties and reinforces regional resilience.



Reliable and resilient infrastructure

Rail has proven its reliability in times of crisis – moving people, goods and essential supplies when other networks are disrupted. Rail Baltica provides infrastructure for heavy military equipment, with a daily cargo capacity of up to 55,000 tons, cutting transport preparation by up to 50%.



A strategic link in NATO's defence network

Rail Baltica boosts regional security by providing vital infrastructure for mobility and logistics. Strengthening NATO ties, it ensures faster response times and better coordination to protect lives and defend freedoms.

Rail Baltica's economic benefits outweigh the required investments

Capex for Phase 1 of Rail Baltica project

€15.3 billion

Rail Baltica pays back more than it costs, proving that smart investments drive real value. However, Rail Baltica is more than just numbers. It is about reconnecting the Baltics to the heart of Europe, unlocking opportunities for trade, travel and innovation. It is how we build jobs, open markets and secure prosperity for generations. This is how the Baltics grow wealthier, together.

Economic impact (direct and indirect)

€45.4 billion

Socio-economic benefits of €23 billion

Rail Baltica's immediate and tangible benefits for multiple sectors:

Passengers: time, costs, fewer accidents

Freight: costs savings

Environment: emissions reduction

Direct labour benefits: employment growth, salary increase

Wider economic impact up to €22 billion

Rail Baltica influences regional development by boosting connectivity and fostering development across multiple sectors

GDP growth

0.5-0.7% annually

Knowledge that lasts for generations

By bringing together railway and related industry experts from around the globe, Rail Baltica fosters knowledge exchange and advances the region's technical capabilities, equipping the Baltics with the skills and expertise needed to tackle major projects and drive future innovation.



Faster and easier travel between Baltic cities

With an anticipated annual demand of about 15 million passenger trips, Rail Baltica puts passengers at the heart of its vision. The new railway will transform daily life by saving time, expanding routes, lowering travel costs and reducing accidents, among other benefits.



Stronger local economies

Rail Baltica will connect smaller towns to big cities with faster, more reliable transport, improving access to jobs, schools and services. It will also boost logistics, enabling over 9 million tons of annual freight transport with a cost-effective, high-capacity rail option.



Driving a sustainable future

Rail Baltica will be fully electrified, reducing fossil fuel demand by up to 3.3%. It will attract over €350 million in local renewable investments and cut short-haul flights, saving more than €11 million – helping to achieve the region's Green Deal goals and advancing the Baltics toward a greener future.

Knowledge that lasts for generations

Rail Baltica is not just about job creation – it is about building a more skilled and competitive workforce for the future. The project introduces new technologies and construction methods to the region, fostering expertise in high-speed rail, sustainable infrastructure and cross-border logistics. With thousands of workers gaining hands-on experience in these fields, Rail Baltica will strengthen regional capabilities in engineering, digital railway systems and environmental management.



Building high-speed rail is among the most difficult infrastructure challenges

Spanning nearly 900 km, Rail Baltica is a technologically complex infrastructure project designed for performance, safety and sustainability. It is not just about laying tracks – it is an integrated rail ecosystem built for the next century.

Equipped with ERTMS for automated operations, its 249 km/h tracks require meticulous calculations for curve radii, inclines and stability to ensure safety and efficiency. With no level crossings, all road and pedestrian intersections are grade-separated. Rail Baltica's engineering integrates environmental considerations at every stage, incorporating wildlife crossings, noise barriers and vibration-damping systems to minimise impact on ecosystems and communities.

Technical parameters:

Total line length	~ 900 km
Design speed	249 km/h for passenger trains 120 km/h for freight trains
Standard gauge	1435 mm
Electrified double track	2 x 25 kV Single track in phase 1 Double track in full project scope
Axle load	25 t
Traffic management	ERTMS L2

Infrastructure system:

7 international passenger stations
45 local passenger stations/stops

~50 structures (bridges, overpasses, viaducts, tunnels)

6 infrastructure maintenance facilities

>90 wildlife crossings (ecoducts, culverts, overpasses)

14 freight terminal and port connections

The railway is moving from vision to reality as large-scale construction begins

The project has fully entered the construction phase, with mainline development actively underway in all three countries, alongside the construction of international passenger stations, railway crossings, bridges and other key infrastructure. By the end of 2025, 43% of the mainline is expected to be construction-ready and actively advancing.



Phased implementation:

Fully operational mainline from Estonia to Poland by 2030

To meet increased investment requirements and the ambitious 2030 deadline, Rail Baltica will be implemented in phases. The first phase will establish an operational cross-border corridor linking Estonia, Latvia and Lithuania with Poland. The second phase, dependent on future funding, will complete full integration into Europe's rail network.

Rail Baltica's project funding

Rail Baltica, the largest infrastructure project in the Baltic region in a century, is receiving substantial investments.

Currently available project funding:

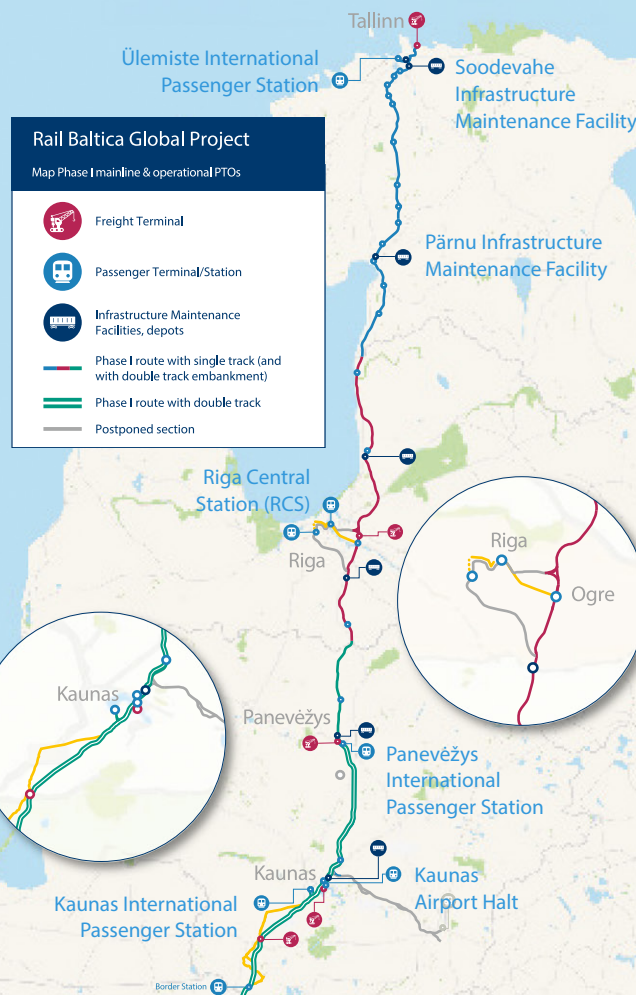
**More than
€4 billion**

The project is exploring additional funding strategies and sources, as it relies on EU funds and national budgets.

Funding sources:

Up to 85% of the total eligible costs are funded by the EU's Connecting Europe Facility

Additional support from EU funds and national co-financing.



Who is making Rail Baltica happen

RB Rail leads Rail Baltica's planning, system integration and assurance, subsystem development, consolidated material procurement and cross-border integration. Each country has its own national implementing body – Rail Baltic Estonia, Eiropas Dzelzceļa līnijas in Latvia and LTG Infra in Lithuania – responsible for local execution.

Central project coordinator

RB Rail

Overall project and programme coordination, financing strategy, railway subsystems, interoperability and certification.

Estonian implementing body

Rail Baltic Estonia

National project implementation, construction, infrastructure management and functional planning.

Latvian implementing body

Eiropas Dzelzceļa līnijas

National project implementation, construction, infrastructure management and functional planning.

Lithuanian implementing body

LTG Infra

National project implementation, construction, infrastructure management and functional planning.

Who owns RB Rail

RB Rail, a joint venture equally owned by Estonia, Latvia, and Lithuania, is responsible for ensuring international coordination of the Rail Baltica project. The responsible ministries of Estonia, Latvia and Lithuania provide regulatory oversight, secure national funding and ensure alignment with national and EU policies.

Estonia –
Ministry of Climate

Rail Baltic Estonia

Latvia –
Ministry of Transport

Eiropas Dzelzceļa līnijas

Lithuania – Ministry of Transport
and Communication

LTG Infra

RB Rail

Central project coordinator

A project fostering partnerships between local and international businesses

As Rail Baltica advances, it opens up wide opportunities for collaboration. With over 400 suppliers from the Baltics, Europe, and beyond, global leaders and local companies are working together to bring the project to life. The map below shows the countries where participating companies contributing to Rail Baltica are based.



Partner with Rail Baltica

Check in regularly at railbaltica.org/tenders/.

Sign up for the Rail Baltica procurement newsletter.

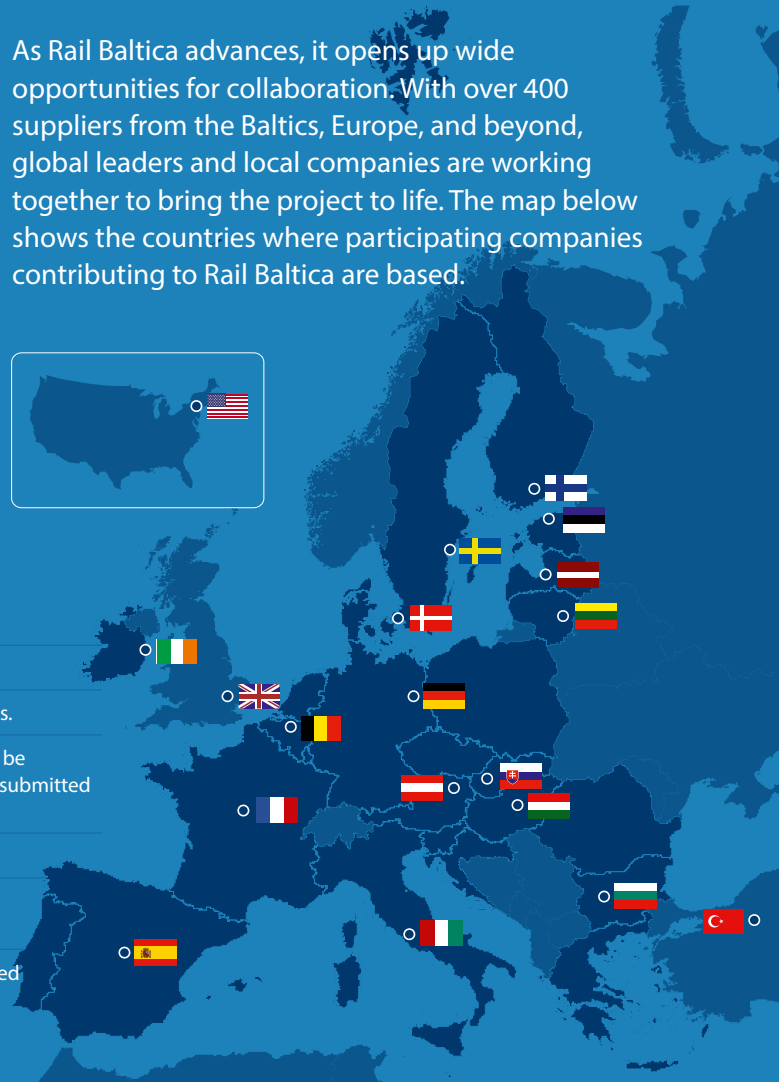
Familiarise yourself with the minimum qualification requirements for suppliers.

Note that applications/proposals in RB Rail procurement procedures can only be submitted through the E-tendering system eis.gov.lv. Applications/proposals submitted by email or in paper format outside the e-tendering system will be rejected.

Pay close attention to procurement requirements.

Send questions and feedback as early as possible regarding any procurement document.

Choose your partners wisely to ensure that, together, you will have the required resources and will be ready to deliver the contract.




 [@Rail Baltica](#)

 [@RailBaltica](#)

 [@rb-rail](#)

 [@RailBalticaGlobalProject](#)

 [@railbalticaofficial](#)

flickr [@railbalticaglobalproject](#)

Learn more about the project

railbaltica.org

rbestonia.ee

edzl.lv

rail-baltica.lt

